



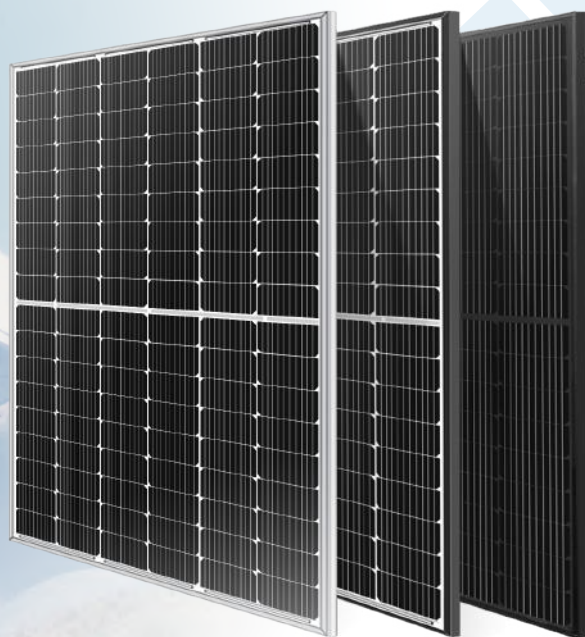
Monofacial

Bifacial

LP182*182-M-54-MB

PERC Dual Glass

Rated Power 395-410W



MBB Cell
New circuit design, lower internal current, lower internal resistance loss.



Low Light Features
Higher performance under low light environment.



Bifacial with dual glass
Module adopts 108 pcs of 182*182mm half cells, bifacial module provide an additional 5%~25% output.



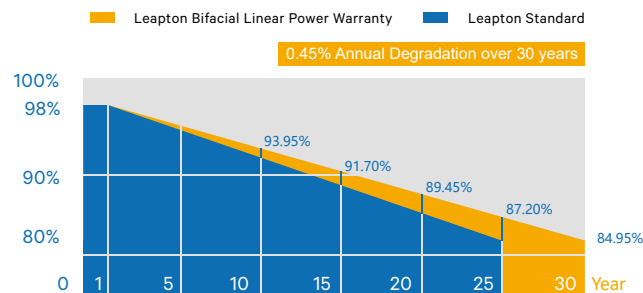
PID Protection
Ensure the attenuation probability caused by PID phenomenon is minimized.



Harsh Environmental Adaptability
Strict salt spray and ammonia corrosion test by TUV Nord.



Load Capacity
Mechanical load tests including wind load 2400 Pa and snow load 5400 Pa done by TUV Nord.



Headquarter : Leapton Energy Co., Ltd.

Tosei Bldg. 6F, 1-2-1 Aioi-cho, Chuo-ku Kobe-shi, Hyogo, 650-0025, Japan

Manufacturer : Leapton Solar (Changshu) Co., Ltd.

No.9, Sunshine Avenue, Changshu City, Jiangsu, China

+81-78-382-3182

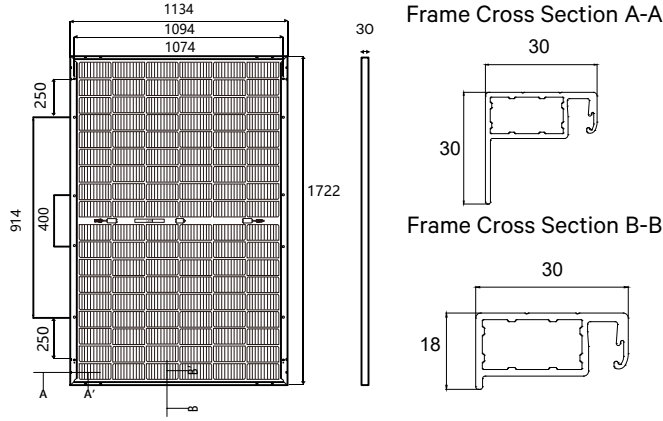
www.leaptonenergy.jp

+86-512-88800068

info@leaptonenergy.com

www.leaptonpv.com

MECHANICAL DIAGRAMS



SPECIFICATIONS

Weight	24kg
Dimensions	1722mm*1134mm*30mm
Cell Dimensions	182*182mm
Cell Amount	54*2 pcs
Maximum System Voltage	1500V
Junction Box	IP68
Frame	Aluminum Alloy
Cable	4mm ² , N 1100mm/P 1100mm for Horizontal installation 4mm ² , N 300mm/P 300mm for Vertical installation
Connector	MC4 compatible
Application Level	Class A
Bifaciality	70±5%

ELECTRICAL PARAMETERS AT STC

Power	395W	400W	405W	410W
Open Circuit Voltage	36.74V	36.94V	37.14V	37.34V
Short Circuit Current	13.55A	13.60A	13.65A	13.70A
Maximum Power Voltage	30.62V	30.92V	31.12V	31.32V
Maximum Power Current	12.88A	12.94A	13.00A	13.06A
Module Efficiency	22.23%	20.48%	20.74%	21.00%

* Under Standard Test Conditions (STC) of irradiance of 1000 W/m², spectrum AM 1.5 and cell temperature of 25°C.

ELECTRICAL PARAMETERS AT NMOT

Power	296W	299W	303W	307W
Open Circuit Voltage	34.54V	34.72V	34.91V	35.10V
Short Circuit Current	11.13A	11.17A	11.26A	11.34A
Maximum Power Voltage	28.49V	28.75V	28.94V	29.13V
Maximum Power Current	10.39A	10.40A	10.47A	10.54A
Module Efficiency	15.16%	15.31%	15.52%	15.72%

* Under Nominal Module Operating Temperature (NMOT), irradiance of 800 W/m², spectrum AM 1.5, ambient temperature 20°C, wind speed 1 m/s.

ELECTRICAL PARAMETERS (AT 10% BIFACIAL POWER OUTPUT)

Output Power	435W	440W	446W	451W
Open Circuit Voltage	36.76V	36.96V	37.16V	37.36V
Short Circuit Current	14.82A	14.86A	14.93A	14.97A
Maximum Power Voltage	30.63V	30.93V	31.13V	31.33V
Maximum Power Current	14.20A	14.22A	14.33A	14.39A

TEMPERATURE CHARACTERISTICS

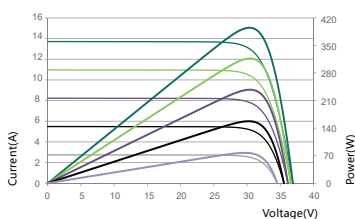
NMOT	41±3°C	Temp Coefficient of ISC	+0.05%/°C
Temp Coefficient of VOC	-0.265%/°C	Temp Coefficient of Pmax	-0.34%/°C

PACKING CONFIGURATION

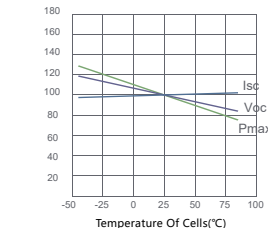
Modules/Pallet	36 Pieces	Modules/40'Container	936 Pieces
Packing Description	26 Pallets, Total=(36+36)x13=936 Pieces		

CHARACTERISTICS

LP182*182-M-54-MB-400W



LP182*182-M-54-MB-400W



MAXIMUM RATING

Output Tolerance	0~+5W
Operating Temperature	-40°C~+85°C
Wind Load/Snow Load	2400pa/5400pa
Fuse Current	25A



Headquarter : Lepton Energy Co., Ltd.

📍 Tosei Bldg. 6F, 1-2-1 Aioi-cho, Chuo-ku Kobe-shi, Hyogo, 650-0025, Japan

☎ +81-78-382-3182

🌐 www.leptonenergy.jp

Manufacturer : Lepton Solar (Changshu) Co., Ltd.

📍 No.9, Sunshine Avenue, Changshu City, Jiangsu, China

☎ +86-512-88800068

✉ info@leptonenergy.com

🌐 www.leptonpv.com

